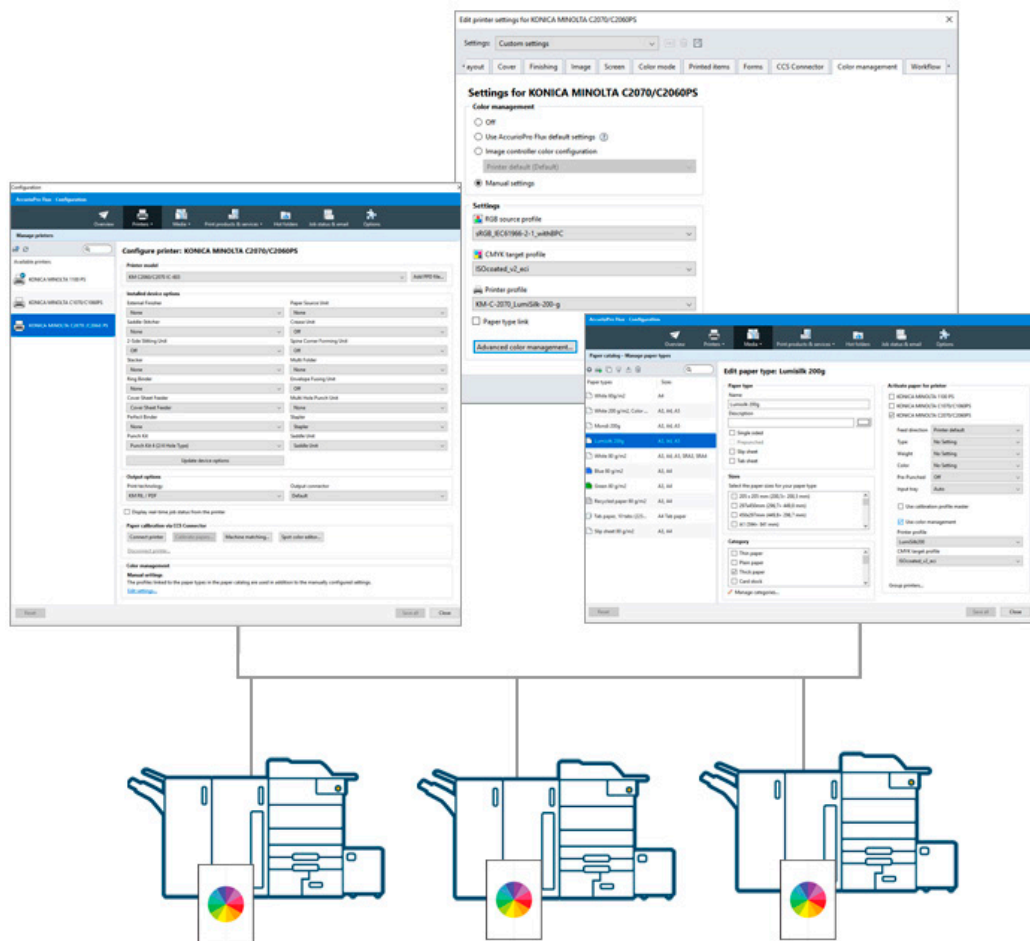


Color management How it works with Flux Workstation



In Flux Workstation you have full control over color management and can flexibly control the settings on all printers that work with Konica Minolta controllers from version IC-601 upwards.


Color management with Flux Workstation

In AccurioPro Flux, you configure color management in the printer settings. These can be accessed in the printer configuration, in the product configuration and directly in the print job. In addition, you can assign your own color profiles to the individual paper types.

On the controller the settings are stored as a fixed set of a color configuration. Individual settings cannot be customized for a print job. In AccurioPro Flux, on the other hand, you can define your own set and – individually for each print job – apply the color profiles of the papers used. This allows you to flexibly set the color management and automate it at the same time.

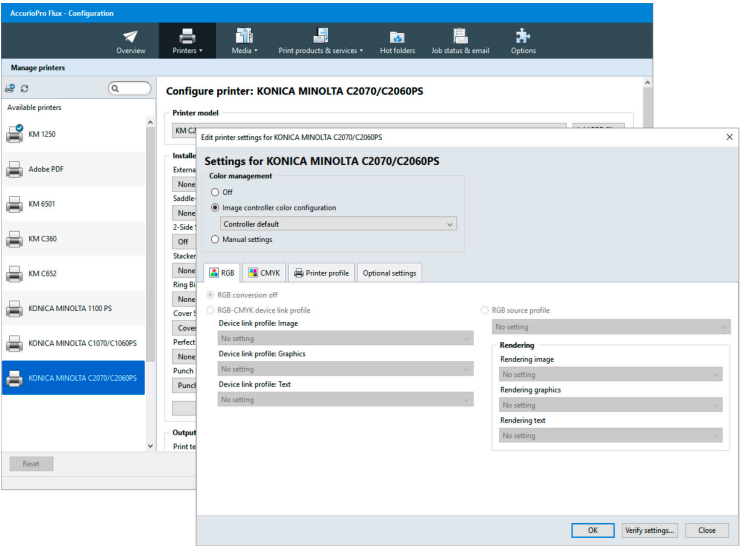
The Konica Minolta printer controllers only allow one paper profile per print job. By default, the color profile of the first paper is used in the print job. AccurioPro Flux allows you to decide which color profile to use. For example, if you print brochures that use different types of paper for the cover and inside pages, the printer uses the cover's color profile by default. In a print product, however, you can specify that a different color profile, such as that of the inside pages, is to be used.

Let's briefly introduce the setting options and their interdependencies.






Default settings in the printer configuration

You can assign color management presets for each printer as **AccurioPro Flux default settings**. Whenever a printer is used for printing and no further specifications for color management are available, the preset values in Flux Workstation are used.



Printer presets are applied to print products as default.

| | | |
|---|--|---|
|  <p>Paper profiles in the paper catalog</p> <p>If you have activated Manual settings in the printer configuration, you can assign your own color profiles to the papers of this printer in the paper catalog.</p> <p>Whenever the papers are used, the color profiles are read out.</p> <p>Only requirement: In the print job, the AccurioPro Flux default settings must be activated for color management.</p> |  <p>Default settings in the print products</p> <p>If the AccurioPro Flux default settings are activated in the print product, the printer's specifications are adopted and the color profiles of the papers used are read out.</p> <p>If you activate Manual settings in the print product, you can define custom settings for the print product. These manual settings overwrite the settings from the printer configuration and the color profiles from the paper catalog.</p> |  <p>Individual settings in the individual print jobs</p> <p>By default, the specifications are read from the print product used.</p> <p>If you activate Manual settings in the print job, you can define your own settings specifically for this individual print job. These manual settings overwrite the settings from the printer configuration, the print product and the paper profiles from the paper catalog.</p> |
|---|--|---|



Color management as default for printers

- 1 Open the printer configuration under **Configuration | Printers | Printers**.
- 2 Select the desired printer.

The screenshot shows the 'Configuration' window for a printer. The left sidebar lists available printers, with 'KONICA MINOLTA C2070 /C2060 PS' selected. The main area is titled 'Configure printer: KONICA MINOLTA C2070/C2060PS'. It contains several sections: 'Printer model' (KM C2060/C2070 C-503), 'Installed device options' (External Finisher, Paper Source Unit, etc.), 'Output options' (Print technology, Output connector), and 'Paper calibration via CCS Connector'. The 'Color management' section is highlighted with a yellow box and contains the following text:

Color management
Manual settings
 The profiles linked to the paper types in the paper catalog are used in addition to the manually configured settings.
[Edit settings...](#)

- 3 Click **Edit settings...** in the **Color management** section.
- 4 In the following dialog window, activate **Manual settings** and specify the desired color profiles.

For print jobs with color management applies:

Whenever this printer is used and there are no other color management settings defined, the color management values set in the printer configuration are used. The settings on the device itself are ignored.

Note: During printing, the settings in the printer configuration can be overwritten by settings in the paper catalog, in the print product and by the individual settings in the print job.

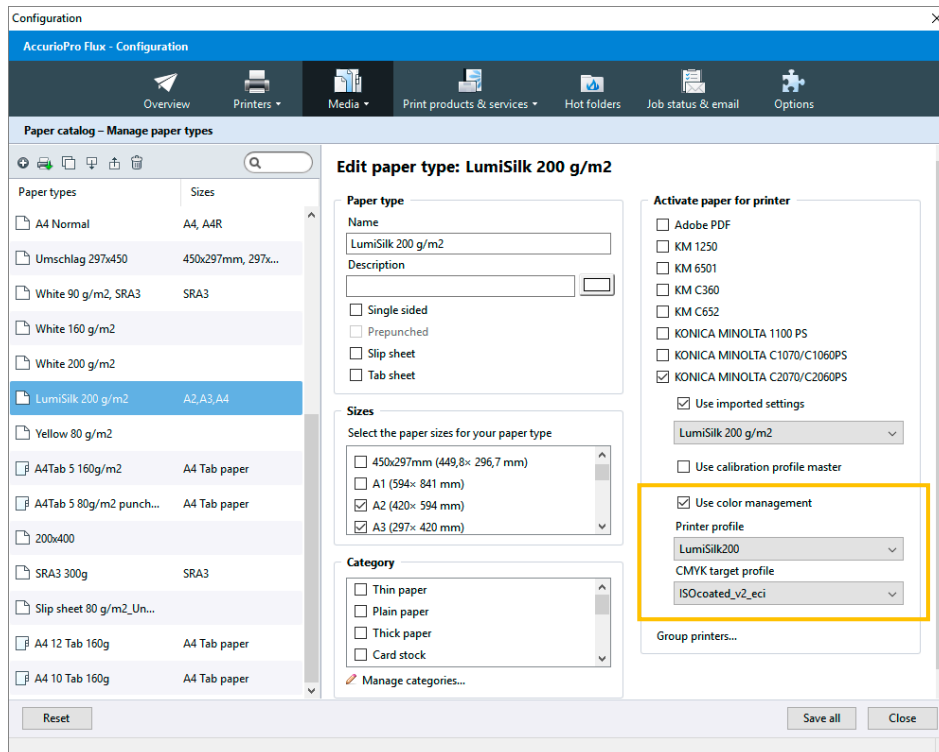


Color profiles as default for a paper type

If you have activated **Manual settings** in the printer configuration, you can assign your own color profiles to the papers of this printer in the paper catalog.

In order to use the color profiles from the paper catalog, the setting **Use AccurioPro Flux default settings** must be activated additionally in the color management section of the printer settings within the product configuration or within the print job itself.

- 1 Open the product configuration under **Configuration | Media | Paper catalog**.
- 2 Select the desired paper type.



- 3 In the right panel, under **Activate paper for printer**, select the printer on which you are using the paper and to which you want to assign a printer profile. A definition area is opened.
- 4 Activate the **Use color management** check box.
- 5 Select a **Printer profile** and a **CMYK target profile**.
- 6 Set the color profiles for this paper for all printers on which you want to use color management.
- 7 Set the color profiles for all papers with which you want to produce correct color output.
- 8 When you have made all settings, save them by clicking **Save all**.

For print jobs with color management applies:

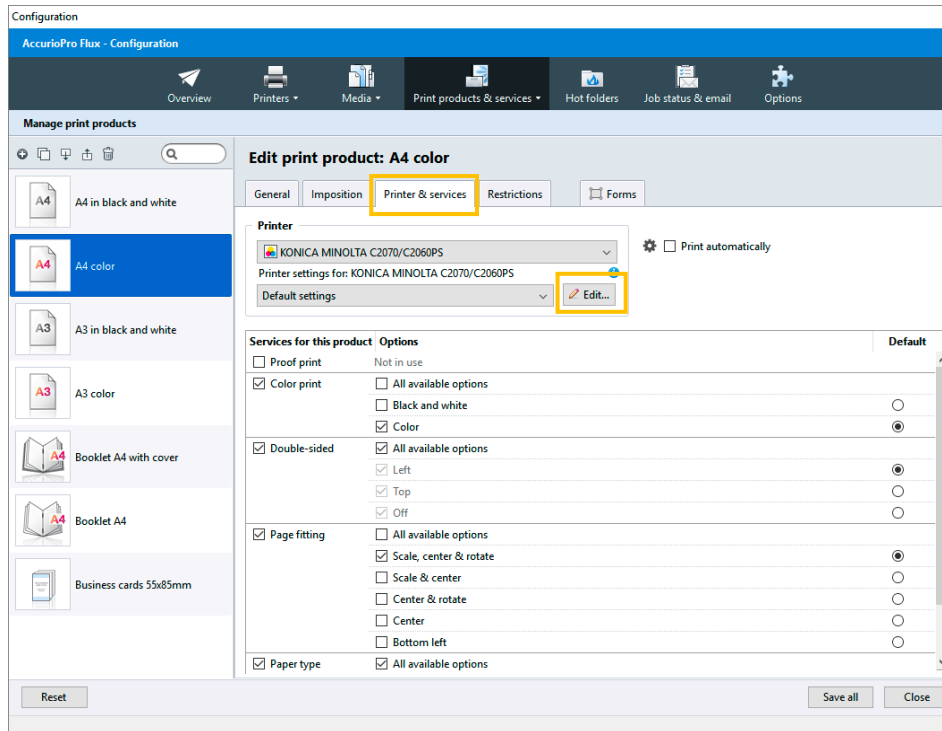
Whenever that paper is used, the profiles are read out and the colors are modified for the paper type using the profile specifications for output on the selected printer. The preset sets in the printer configuration in Flux Workstation or on the printer itself are ignored. It is not a problem if you change the paper type for a print job: Flux Workstation automatically checks which profiles have been set for the paper and the printer you want to use.

Note: During printing, the settings in the paper catalog can be overwritten by settings in the print product and individual settings in the print job.



Color management as default in the print product

- 1 Open the product configuration under **Configuration | Print products & services | Print products**.
- 2 Select the desired product.
- 3 Open the **Printer & services** tab.



- 4 Click **Edit...** in the **Printer** section.
- 5 In the following dialog window, open the **Color management** tab.
- 6 Activate **Manual settings** and specify the desired color profiles.
- 7 By clicking **Advanced color management** you can specify additional color management settings.

For print jobs with color management applies:

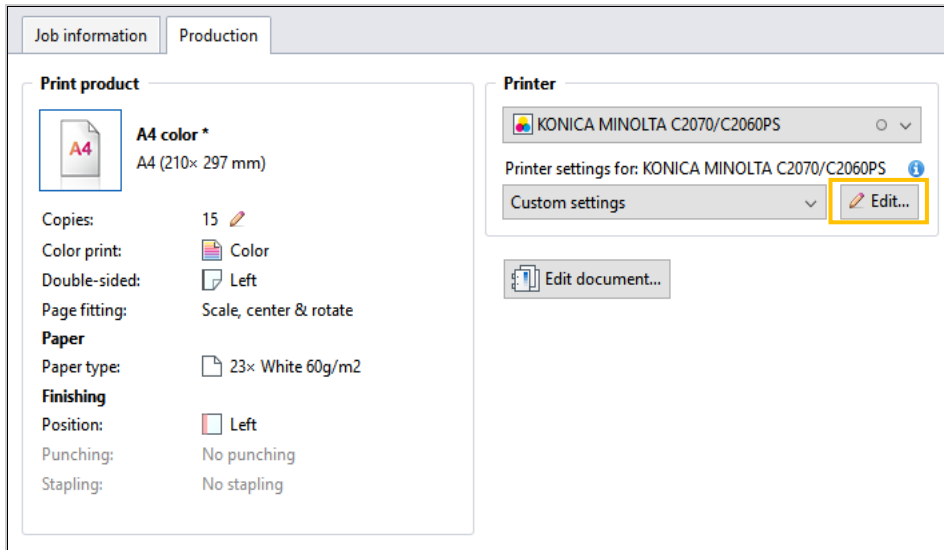
Whenever a print job is printed using this print product, the color management values set in the print product are used. The default settings set in the printer configuration in Flux Workstation, in the paper catalog or on the printer itself are ignored.

Note: During printing, the settings in the print product can be overwritten by the individual settings in the print job.

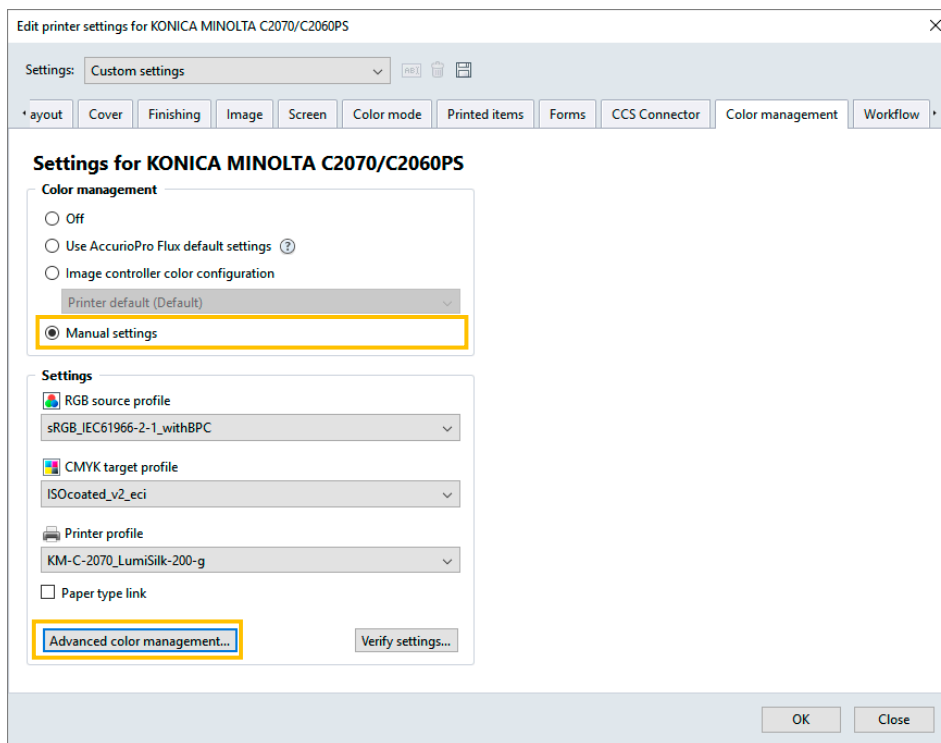


Individually in the current print job

- 1 Open the **Production** tab and click on **Edit**.



- 2 In the following dialog window, open the **Color management** tab.



- 3 Activate **Manual settings** and select the desired color profiles.
- 4 Click **Advanced color management** to specify additional color management settings.

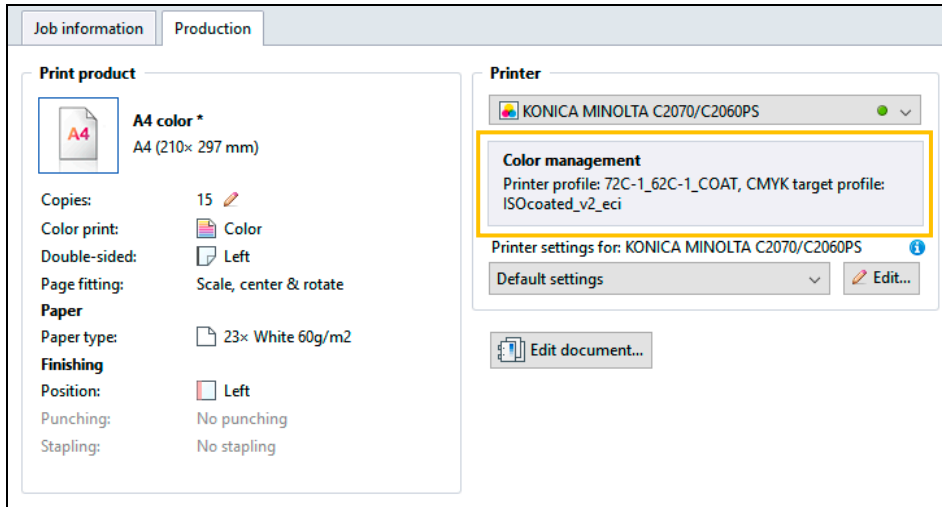
Settings that you make directly in the print job always have the highest priority and overwrite all other settings that were set in Flux Workstation (printer configuration, paper catalog, print products) or on the printer itself.



Check before production run

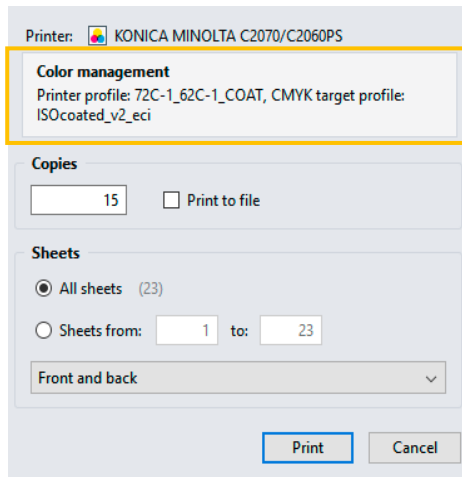
Before printing, you can check which color profiles are sent to the controller together with the print job. When color management is active in the print job, the current color profiles are displayed at the following locations:

– In the Production tab






The selected color profiles are displayed. If output is generated with a printer cluster, the information is displayed for all printers in the cluster.

– In the print dialog



Also in the print dialog the selected color profiles are displayed. If output is generated with a printer cluster, the information is displayed for all printers in the cluster. During output, the system checks whether the selected color profiles are available on the controller of the printer. The status is displayed with various icons. If no symbol is displayed, no check has been performed or the check is in progress.

-  Color profiles are available.
-  At least one color profile is not available on the controller.
-  Several papers with their own color profiles are used in the print job. For output, the printer profile of the first paper used in the print job is used for all papers. The symbol can also mean: The color profiles cannot be checked.

Some closing remarks ...



For color management to be set and used, the desired printer must support color management, it must be switched on and connected to Flux Workstation. Supported are all printers that work with Konica Minolta controllers from version IC-601.

If you have configured your system correctly, color management will be implemented fully automatically and without the need for manual steps for color matching. AccurioPro Flux checks which printer and which paper type are being used for each print job. It checks the profiles that are set in the printer configuration, in the product configuration, in the paper catalog and in the job settings. The profiles that are currently valid are then selected for output on the image controller. The profiles are evaluated and fixup values are determined here. This ensures precisely defined color reproduction.



This feature is available in
– AccurioPro Flux Essential
– AccurioPro Flux Premium
– AccurioPro Flux Ultimate

(Version 7.8)

If you want to use these features, you should be familiar with these functions in AccurioPro Flux:

- Configuring printers
- Setting up papers in the paper catalog
- Setting up print products
- Editing printer settings

Here you can find further information:

- Online help of Flux Workstation:
Printing documents | Color management in Flux Workstation
Printing documents | Editing printer settings
Configuring the program | Configuring printers | Color management
Configuring the program | Setting up the paper catalog | Activating color management for paper types
Configuring the program | Setting up print products | Selecting printers and services | Printer settings for
- More How-to guides: <https://www.dots.de/en/complete-print-workflow/how-tos/>

© 2018 dots Gesellschaft für Softwareentwicklung mbH

All rights reserved. All information for this documentation has been compiled with care, but is provided without warranty of any kind.

AccurioPro is a trademark of Konica Minolta, Inc. All other brand names and product names belong to the respective companies and are protected by international trademark, brand and patent laws.