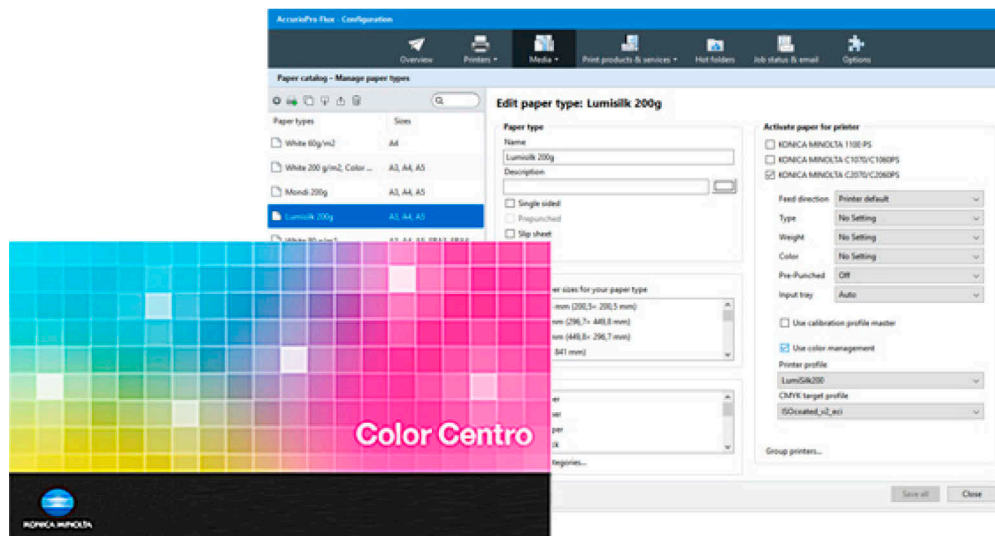


Color management

Creating a printer profile with Color Centro and assigning it to a paper in Flux Workstation



Did you ever wonder how to create a printer profile and how to use it in Flux Workstation for a specific type of paper? We show you a workflow in which you use Color Centro to create a printer profile for a paper type and assign it to the paper in the paper catalog in Flux Workstation.

Creating a printer profile and using it in Flux Workstation

With Color Centro you can create a printer profile specifically for your printer and paper type. In Flux's paper catalog you can assign the printer profile to the paper. Whenever the paper in Flux Workstation is used for a print job, the color profiles are read out and sent to the printer with the print job.

Flux Workstation supports color management for all printers using Konica Minolta controller IC-601 or higher.



These steps are required

Printer

- Loading paper in the paper tray
- Adding the paper to the printer's paper catalog

Color Centro

- Printing a test chart
- Measuring the color fields
- Saving the printer profile in Color Centro

Flux Workstation

- Adding the paper to the paper catalog of Flux Workstation
- Selecting **Manual settings** for color management in the printer configuration
- Assigning the printer profile to the paper

Color Centro: Creating a printer profile



Technical requirements

- The printer and Color Centro are installed on the same computer.
- The printer is switched on and connected to Flux Workstation.
- The IP address of the printer is known.
- A spectrophotometer is available and switched on.

Printing a test chart

- 1 Start Color Centro and connect it to the printer for which you want to create the profile.
- 2 Open the **Profile Management** and go to the section **Printer Profile**.
- 3 Start the Color Centro Profiler by clicking on **New**.
- 4 Specify the printer, the paper and the spectrophotometer.
- 5 Print the test chart.

Measuring color fields with the spectrophotometer

- 1 Measure the color fields of the test chart with your spectrophotometer.
The measured values are displayed in Color Centro, compared with the target values and corrected.
- 2 Confirm the following steps in Color Centro.

Saving the printer profile

- 1 Specify the name for the printer profile and check the folder, where the printer profile is saved.
- 2 Confirm the following steps.
The profile is stored on the controller of the printer and can be used in other applications, for example Flux Workstation.

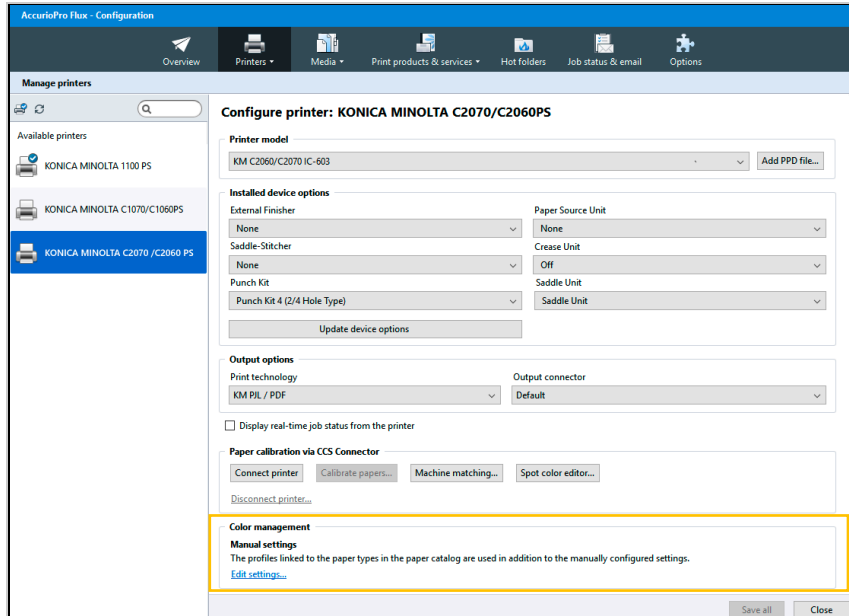
Tip: Include the paper name in the profile name. If the first 8 letters of the profile name match the paper name, the printer profiles in Flux Workstation are automatically recognized and preset by default. All you have to do in Flux Workstation is activate the color management for the desired paper type.

Flux Workstation: Using the printer profile



The color management functions are only available in the paper catalog if you have activated manual color management in the printer configuration of the desired printer.

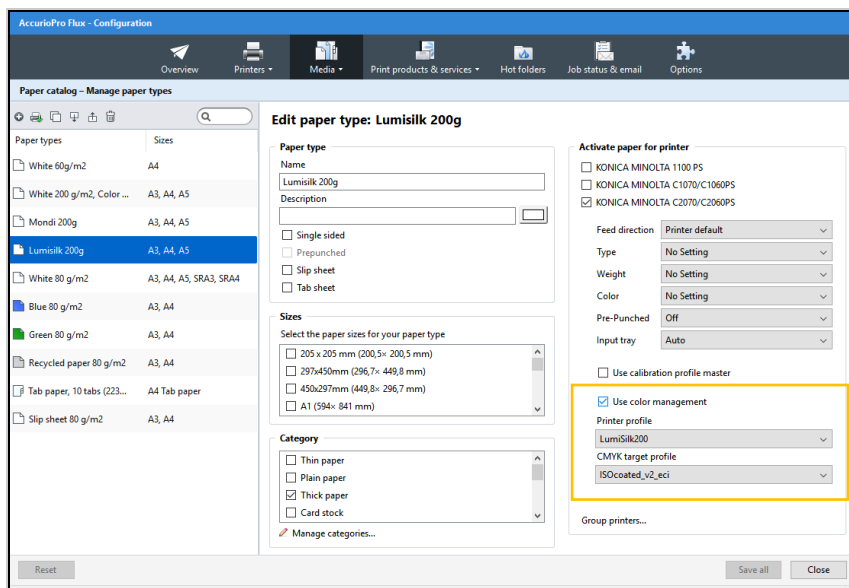
- 1 Open the printer configuration under **Configuration | Printers | Printers**.
- 2 Select the desired printer.



- 3 Click on **Edit Settings...** in the **Color Management** section of the settings panel.
- 4 Select **Manual settings** in the following window.
The paper catalog now displays the color management functions for this printer.

The paper must be available in the paper catalog of Flux Workstation. If not, you can import the paper from the printer. You can then assign the printer profile to the paper in the paper catalog.

- 1 Open the paper catalog under **Configuration | Media | Paper catalog**.
- 2 Select the desired paper.



- 3 Activate the paper for the selected printer.
- 4 Activate the check box **Use color management**.
- 5 Select the profile you created under **Printer profile** (*output profile*).
- 6 Also check the settings of the **CMYK target profile** (*simulation profile*).

Some closing remarks ...



In order to use the color profiles from the paper catalog, the setting **Use AccurioPro Flux default settings** must be activated in the color management section of the printer settings within the product configuration or within the print job itself.



If you want to create your own printer profiles, you should be familiar with the following programs and devices:

- Your printer
- Color Centro
- Spectrophotometer
- Flux Workstation

Here you can find further information:

Online help of Flux Workstation

Configuring the program | Setting up the paper catalog

- Creating new paper types
- Activating paper types for printers
- Importing paper types from a printer
- Updating paper types

Color management in Flux Workstation

- Configuring the program | Configuring printers | Color management
- Configuring the program | Setting up the paper catalog | Activating color management for paper types
- Printing documents | Color management in Flux Workstation

About your printer, Color Centro and the spectrophotometer

- Please refer to the corresponding manuals

More How-to guides:

<https://www.dots.de/en/complete-print-workflow/how-tos/>

© 2018 dots Gesellschaft für Softwareentwicklung mbH

All rights reserved. All information for this documentation has been compiled with care, but is provided without warranty of any kind.

AccurioPro is a trademark of Konica Minolta, Inc. All other brand names and product names belong to the respective companies and are protected by international trademark, brand and patent laws.