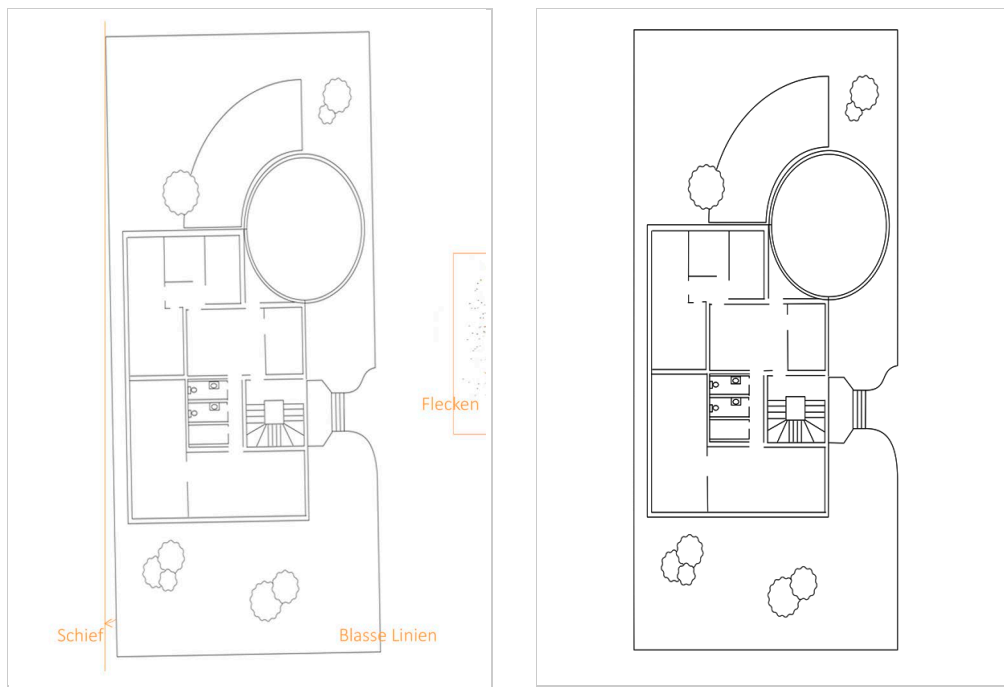


How-to: AccurioPro Flux

Flux Raster Editor: Enhance scanned documents automatically



When scanning, typical problems occur on a regular basis: The original document is not exactly aligned on the scanner, the scanner glass is not completely clean or the scan is too pale.

By using the Flux Raster Editor of AccurioPro Flux you can easily fix these problems in a few simple steps.

Enhance scanned documents automatically

The job list contains a scanned job. The scan is a bit stained, the original was aligned askew on the scanner glass and the lines were scanned too pale. By using the automatic functions of the Flux Raster Editor in AccurioPro Flux you can fix these errors very quickly.



Please note: The image editor is only available in Flux Workstation.



Open job in the image editor

- 1 Select the job in the job list.
- 2 Select the menu command **Job | Edit images...** or click on the symbol of the same name in the toolbar. The image editor opens.

The toolbar with command icons is located in the upper area.

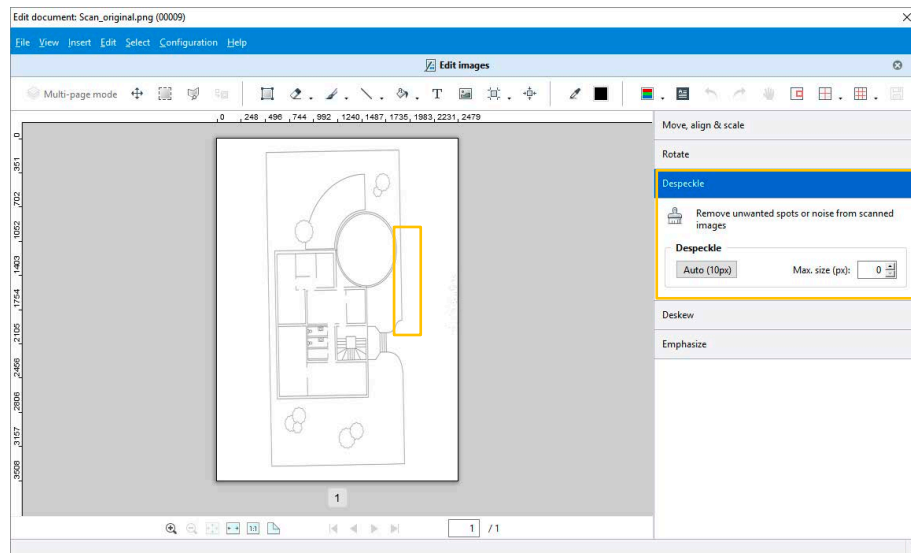
The right section of the window contains the accordion menu. The commands in the accordion menu are arranged in different sections. You can expand a section by clicking on it.

Important: The changes you make in the image editor are saved in the working file and cannot be reset. If necessary, duplicate the job in advance.



Remove stains

- 1 Expand the section **Despeckle** in the accordion menu.
- 2 Click on **Auto**.

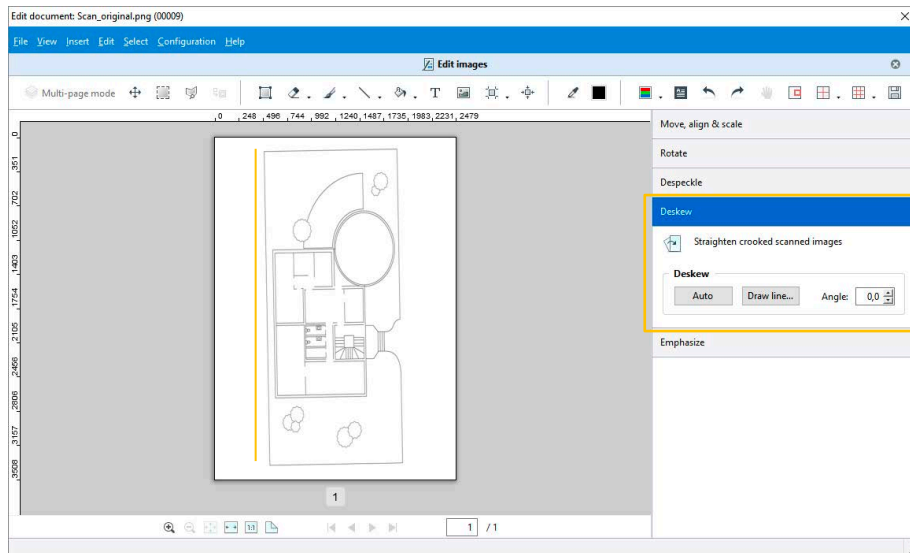


All the objects smaller than the value displayed next to **Auto** will be removed.
For example, a value of **10** means all objects with a size of up to 10 pixels will be deleted.



Align images

- 1 Expand the section **Deskew** in the accordion menu.
- 2 Click on **Auto**.

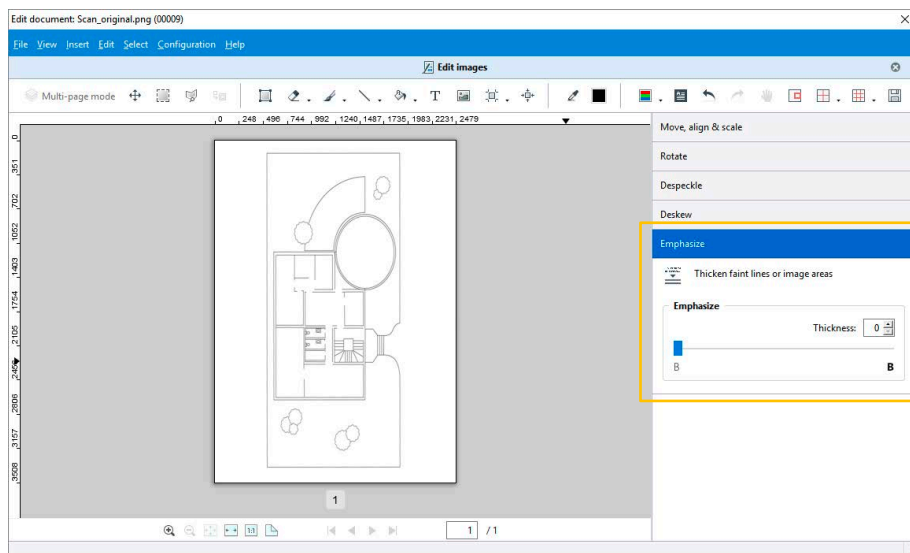


The entire page content is automatically straightened.



Thicken faint lines


- 1 Expand the section **Emphasize** in the accordion menu.
- 2 Select a value next to **Thickness**, for example 2.



The entire page content is thickened by the selected value.



Save changes and close the image editor

- 1 Click on the Save icon  in the toolbar at the top right.
The image editor remains open after saving, so you can save your changes at any time and then make further changes.

Some closing remarks...



For your information:

Original files are the original files users submit with their print job. The files are in the originally sent format. These files remain unchanged when you work in the image editor.

Working files are all the files that are contained in a print job and from which the print file is generated. In AccurioPro Flux, working files are created from the original files in PDF format. Changes you make in the image editor are saved in the working files.



The image editor is part of the *Flux Raster Editor* option.

The option can be purchased for

- AccurioPro Flux Essential
- AccurioPro Flux Premium
- AccurioPro Flux Ultimate

Status: Version 8.0

If you want to reproduce the example, you should be familiar with these functions in AccurioPro Flux:

- Scanning documents
- Managing jobs

Here you can find further information:

- Online help of Flux Workstation: *Edit image contents*
- More How-to guides: <https://www.dots.de/en/complete-print-workflow/how-tos/>

© 2019 dots Gesellschaft für Softwareentwicklung GmbH

All rights reserved. All the information for this documentation has been compiled with care, but is provided without warranty of any kind.

AccurioPro is a trademark of Konica Minolta, Inc. All other brand names and product names belong to the respective companies and are protected by international trademark, brand and patent laws.